

PT-3000-HD

Manual Zoom, Low-light, Outdoor HD IP Camera



- *1080p HD resolution*
- *H.264, MJPEG*
- *Removable on-board storage*
- *0 Lux operation to 30 meters*

The PT-3000-HD is a high-quality, high-resolution color video camera with a vari-focal lens and auto-iris. It will produce high-quality video in low light conditions using built in IR illuminators, to increase low light sensitivity to 0 lux for a distance up to 30 meters. The standard lens is adjustable from 3.3 to 12.0 mm, to provide a horizontal field-of-view of over 70 degrees.

This high resolution HD camera supports 1CIF, 4CIF, and 1080p resolutions. The camera includes removable on-board storage with sufficient capacity to store 1CIF resolution at 4 frames per second for a period of 40 days (24/7).

The camera is housed in an outdoor weatherproof enclosure rated IP66. It requires only a powered Ethernet Connection for operation.

PT-3000-HD Specifications

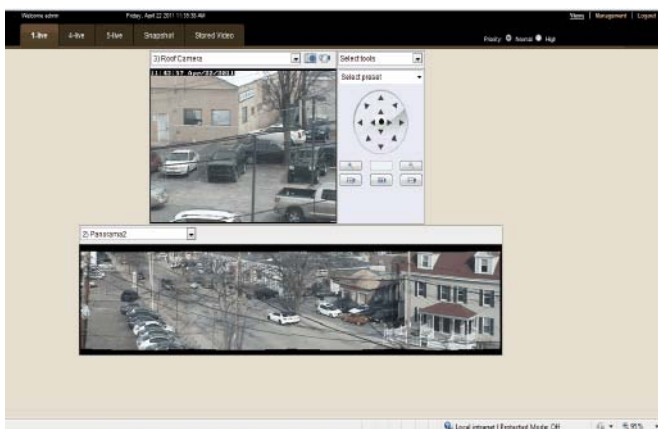
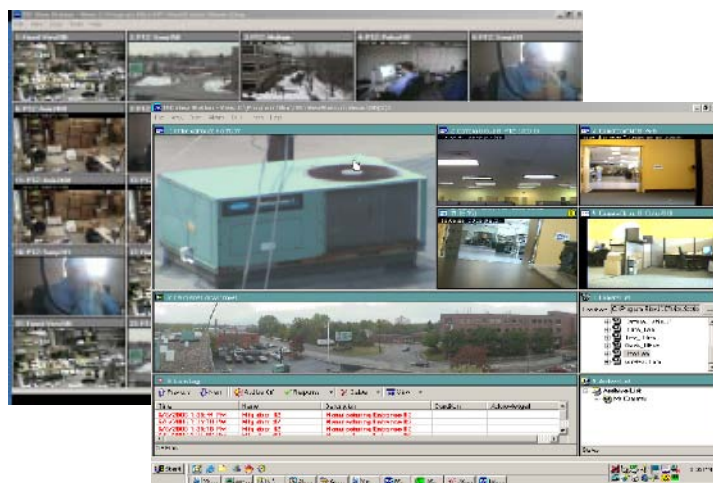
Imager	1/2.5" Progressive CMOS
AES	1~ 1/10000 sec
Exposure	Auto
Min. Illum.	0 Lux (B/W) to 30m w/IR LEDs
White Balance	Auto
Iris	Auto
Focus	Auto and manual
View Angle	21° - 71°
Focal Length	3.3 to 12 mm
F-number	1.4

Ethernet	10/100 Mbps Ethernet, (RJ-45)
I/O Terminals	1 Input, 1 Output
Resolution	Full HD 1080p/4CIF/1CIF
Compression	M-JPEG, H.264
Frame Rate	15 FPS at full HD
Power Req.	12 VDC, PoE, 24 VAC
Power Cons.	5.5 W
Weight	2.07 lbs.
Dimensions	3.3" D x 7.6" L with sunshield
Operating Temp.	-10° - 50° C

Camera System Software

At the heart of our camera system is our **Relay Server Software**. This scalable, enterprise application provides a full range of camera management and viewing features for up to 24 IP-cameras. Camera video can be accessed over a LAN, WAN, VPN, or the Internet from virtually anywhere, and can be connected by fiber, copper, satellite, or encrypted wireless radio. Live and stored video can be viewed and controlled from anywhere on-site or off-site by authorized users from any networked PC.

Fully configurable multi-up displays



Point & click camera access and control

Our **View Station Software** provides comprehensive multi-camera management and viewing. The View Station console is completely configurable. Users can view video from up to 25 cameras on a single or multiple monitors. Tours of selected preset views from any number of cameras can be defined on one or more schedules. The View Station provides sophisticated, yet easy to use alarm management. At the occurrence of a user-defined alarm, any camera control, discreet URL command, or executable program can be invoked.

**For more information contact
Packetalk**



ph: (201) 355-3323
fax: (201) 603-6405
email: sales@packetalk.net