

PTZ-3140-HD1

Outdoor Pan/Tilt/Zoom HD Color IP-Camera



- *1080p HD video with 18x Optical Zoom*
- *Suitable for harsh weather environments*
- *H.264, MJPEG (720p) multi-streaming*
- *Day/Night switching*

The PTZ-3140-HD1 is a high quality, High Definition color video camera with outstanding low-light performance. It has an 18x motor-driven optical zoom and a 4x digital multiplier providing 72x total zoom. The PTZ-3140-HD1 supports dual streaming and can provide full 720p resolution High Definition video at 30 frames per second.

The high speed pan, tilt, and zoom functions can be controlled automatically and precisely from anywhere using the click-to-point and preset view features of the PacketTalk Relay Server Software.

The camera is housed in a weatherproof enclosure rated IP66. It requires only a power source and Ethernet connection for installation.

PTZ-3140-HD1 Specifications

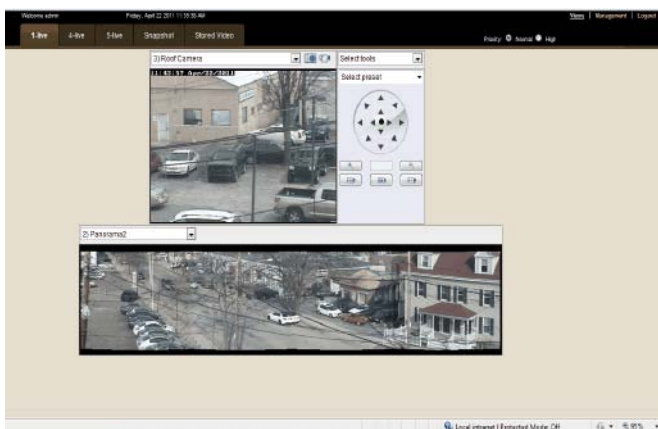
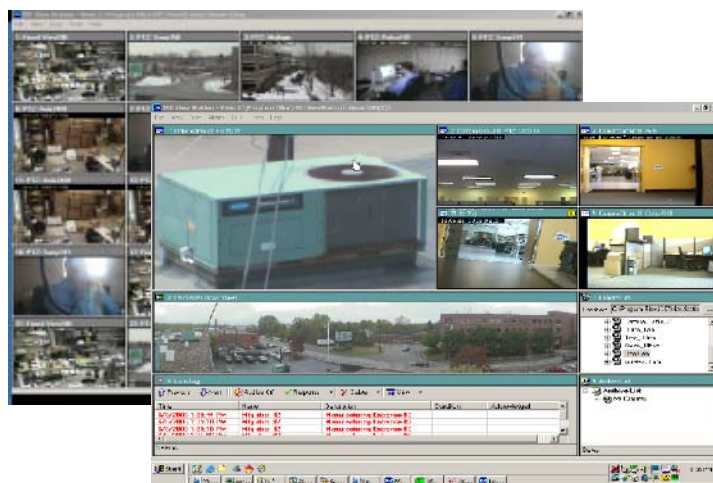
Imager	1/2.8" Progressive Scan CMOS
Shutter	1 to 1/10,000 sec.
Exposure	Auto
White Balance	Auto
Iris	Auto
Focus	Auto and manual
Zoom ratio	18x optical; 4x Digital; 72x Total
View Angle	6.2° - 56.6°
Focal Length	4.7 - 84.6 mm
F-number	1.8 - 2.2
Pan Angle	360°
Pan Speed	400° per Second

Tilt Angle	-10°- 190°
Tilt Speed	400° per Second
Ethernet	10BASE-T/100BASE-TX (RJ-45)
Resolution	720p, 1080p
Compression	M-JPEG, H.264
Frame Rate	30 FPS (720p), 15 FPS (1080p)
Protocols	TCP/IP, HTTP, FTP, SMTP
Weight	14 lbs.
Voltage Req.	110 VAC
Power Cons.	39 W Max
Oper. Temp	-40° to 50° C
Dimensions	14" H x 11" D
Mount	Wall mount standard

Camera System Software

At the heart of our camera system is our **Relay Server Software**. This scalable, enterprise application provides a full range of camera management and viewing features for up to 24 IP-cameras. Camera video can be accessed over a LAN, WAN, VPN, or the Internet from virtually anywhere, and can be connected by fiber, copper, satellite, or encrypted wireless radio. Live and stored video can be viewed and controlled from anywhere on-site or off-site by authorized users from any networked PC.

Fully configurable multi-up displays



Point & click camera access and control

Our **View Station Software** provides comprehensive multi-camera management and viewing. The View Station console is completely configurable. Users can view video from up to 25 cameras on a single or multiple monitors. Tours of selected preset views from any number of cameras can be defined on one or more schedules. The View Station provides sophisticated, yet easy to use alarm management. At the occurrence of a user-defined alarm, any camera control, discreet URL command, or executable program can be invoked.

**For more information contact
Packetalk**



ph: (201) 355-3323
fax: (201) 603-6405
email: sales@packetalk.net