

SOFTWARE

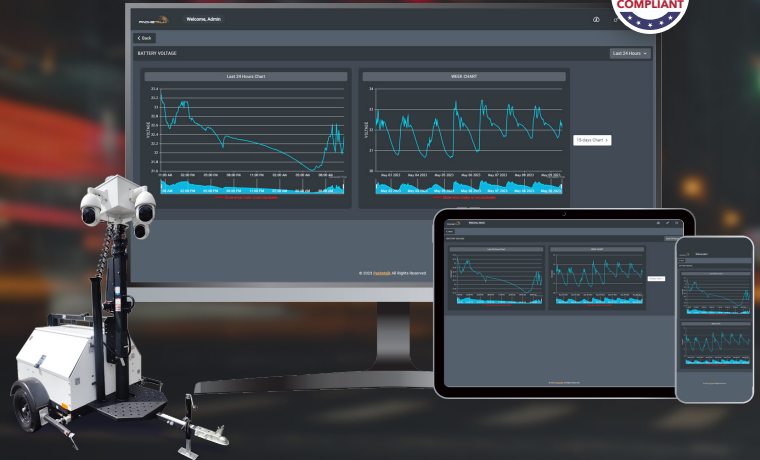
# ON-BOARD SELF HEALING

VITAL TRAILER MONITORING SYSTEM



## KEY FEATURES

- **HANDS FREE ANALYTICS**
- **REAL TIME FIXES WITHOUT DELAY**
- **WEB BASED ACCESS**
- **AUTONOMOUS OPERATIONAL CONTINUITY**  
Real-time data driven automation detects and remediates:
  - Power management
  - Component outages and failures
  - Connectivity issues



## LEARN MORE ABOUT THIS PRODUCT

### Smart Data Capture

The App captures all the monitored vitals for presentation in a user friendly format

### Historical Data

All data captured can be searched in different time increments to analyze trends and develop solutions

### Customized Alerts

Email, phone, and app alerts can be configured to notify users when action is needed for an asset

Example Alerts:

- Service Due
- Battery Voltage Low
- Fuel Level Low
- Engine Run/Off

### Task Scheduler

Users can schedule On/Off and other actions for assets based on dusk/dawn or time of day making the system fully autonomous

### User Permissions

Customizable permissions assignments allow for unique user creation across different privilege levels

### Log Features

All actions on the app are logged and available for audit by appointed users

## ✓ KEY MONITORED VITALS

\* Vary by Trailer

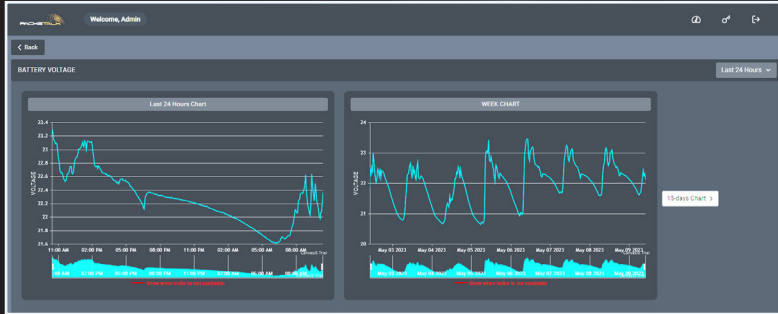
- › Battery Life
- › Battery Voltage
- › Fuel Level
- › Last Engine Run Time
- › Engine Run Time
- › Total Engine Hours
- › Solar Voltage
- › Solar Current
- › Solar Power
- › Temperature

**QUESTIONS? CONTACT US AT**  
201 355 3323 OR [sales@packetalk.net](mailto:sales@packetalk.net)

**PACKETALK.NET**

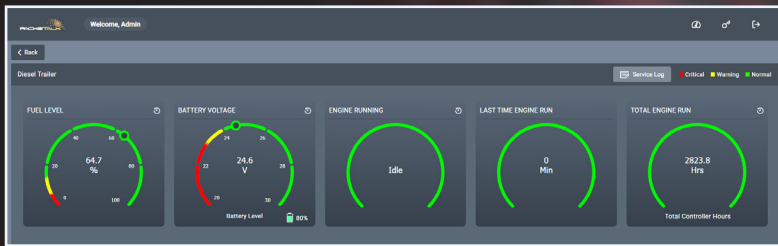
## ON-BOARD SELF HEALING KEY FEATURES

### DRILL DOWN, TRAILER SPECIFIC



Historical Data used to show trends in Monitored Vitals for asset tracking and deployment

### HIGH LEVEL INFORMATION



Real time display of all Monitored Vitals for a specific asset with the ability to select each to explore historical data

### REMOTE MONITORING INTERFACE



Grouped list of all assets in the Packetalk Vitals App displaying trailer status, load status, and key monitored vitals

### TASK SCHEDULER

Scheduler	Start Date	End Date	Type	On-Time	Off-Time	Action
Scheduler107	01-05-2023	05-09-2023	Dusk/Dawn			[Edit] [Delete]
Scheduler108	05-03-2023	05-02-2023	Manually	05:10 pm	05:40 pm	[Edit] [Delete]
Scheduler110Test dusk	05-02-2023	05-10-2023	Dusk/Dawn			[Edit] [Delete]

Built in task scheduler gives the user access to configure assets remotely for autonomous deployment styles

CREATE A PACKETALK ECO-SYSTEM  
**PTVAS**

### Customize a mobile surveillance trailer

Packetalk's trailers provide remote site monitoring with real-time surveillance in high definition video.



< Diesel-Powered Surveillance Trailer PT-RD6000



< Solar or Engine Powered Surveillance Trailer PT-RD5000

### CUSTOMIZED FOR YOU

Packetalk's eco-system is customized to your specific needs, then shipped, preconfigured, and ready for deployment on any leading broadband cellular network.

## GET IN TOUCH

CONTACT US

T (201) 355-3323  
F (201) 603-6405  
E sales@packetalk.net

**PACKETALK.NET**