

CAMERA

RD-PTZ-3130-02

RAPID DEPLOY, OUTDOOR PTZ COLOR IP-CAMERA SYSTEM

KEY FEATURES

- VIDEO MONITORING FOR TEMPORARY APPLICATIONS
- DAY/NIGHT SWITCHING FOR ALMOST ANY LIGHTING CONDITION
- TRANSPORTABLE
- BROADBAND CELLULAR



LEARN MORE ABOUT THIS PRODUCT

Easy Set-up & Break Down

This assembly combines a high-resolution color PTZ camera and a broadband cellular radio, mounted on a rugged tripod with specially engineered quick connect assemblies to facilitate easy set up and breakdown.

Pan-Tilt-Zoom (PTZ) Cameras

- 30x Optical Zoom
- 16x Digital Zoom

High Performance Lowlight Camera

This PTZ camera is a high performance lowlight camera that automatically switches to black and white and removes an IR cut filter to increase sensitivity in low light conditions

Management Software

The pan, tilt, and zoom functions can be controlled automatically and precisely from anywhere using the click-to-point and preset view features of the PTVAS.

"Always On" Network

The camera is shipped, preconfigured, and ready for deployment on leading broadband cellular networks.

Remote Monitoring

Ideal for use in applications that require temporary remote video monitoring such construction sites, public event monitoring, or disaster management.

AI video analytics

8 intelligent OCR modes powered by AI engine which filters objects to focus on human and vehicle detection.

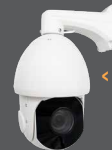
CREATE A SMART CITY

POWERED BY PACKETALK



Add a ALPR asset

Packetalk's ALPR cameras have embedded license plate recognition, AI video analytics and up to 90FPS.



PTZ-3160-HD36ALPR



Add PTVAS

Packetalk Video Analytics System provides a multi-faceted situational awareness platform for all your surveillance needs.



Deploy INAAP

Packetalk Interoperable National ALPR & Analysis Platform. Creates Interoperability across county and state lines for Plate recognition and vehicle exception reports. Equipped with API and third Party integration.

QUESTIONS? CONTACT US AT

201 355 3323 OR sales@packetalk.net

PACKETALK.NET

RD-PTZ-3130-02 KEY FEATURES

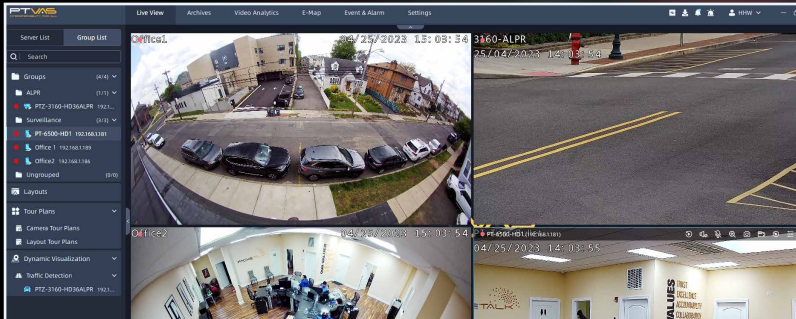
TRANSPORTING/SETUP



Extension options are available if additional radio or camera height is required

All RD Series components include rugged carrying cases to facilitate transporting the camera system to the next required site. The quick connect assemblies and preconfigured components make set up and breakdown of the system quick and easy. You essentially apply power, aim radios, and watch video.

PTVAS : PT CAMERA SYSTEM SOFTWARE



Enterprise-class video management software enables remote viewing and control of video from the RD Series camera systems. Video can be viewed by multiple users from a variety of clients including browsers, SCADA applications, and PTVAS Client Desktop and Mobile. PT's software supports large networks of cameras that can include other wired and legacy cameras along with the RD Series. User-defined multi-up displays, tour management, and alarm management functions are also available.



For PDF of RD-PTZ-3130-02

For more Packetalk Trailers

SPECIFICATIONS

CAMERA	
Image Sensor	1/2.8" Progressive Scan CMOS
Min. Illumination	Color: 0.005Lux@F1.5 B/W: 0Lux with IR on
WDR	120dB Super WDR
Shutter Time	1/100000s~1s
Digital Zoom	16X
Day/Night Mode	Day/Night/Auto/Customize/ Schedule
S/N	>55dB
Analytics	Region Entrance, Region Exiting, Advanced Motion Detection, Tamper Detection, Line Crossing, Loitering, Object Left, Object Removed
Resolution	Up to 4k (3840x2160)
Compression	MJPEG, H.264, H.265
Frame Rate	Up to 90 FPS
CELLULAR ROUTER	
Frequency	1900Mhz Digital & 800Mhz Digital
Download Speed	900-1400 Kbps Avg /3.1 Mbps Peak
Upload Speed	350-500 Kbps Avg /1.8 Mbps Peak
Network	CDMA EVDO Rev. A
Frequency	2.412GHz-2.484GHz
Modulation	802.11b/g
Wireless Security	WPA (Wi-Fi Protected Access) 64/128-bit WEP Encryption
Data Rate	Up to 54Mbps
ASSEMBLY	
Tripod Footprint	6 feet
Height	100" max.
Weight	Tripod in shipping bag: 36 lbs. Hardware in case: 50 lbs. Assembled unit: 85 lbs.
Voltage Req.	110V AC
Power Cons.	50 W
Oper. Temp	-29° to 50° C

GET IN TOUCH
CONTACT US

T (201) 355-3323
F (201) 603-6405
E sales@packetalk.net

PACKETALK.NET