

RADIO

# PT-420

COMPACT 5GHZ WIRELESS SURVEILLANCE

## KEY FEATURES

- HIGH CAPACITY 802.11N/AC
- INDUSTRIAL GRADE IP67-RATED HOUSING WITHSTANDS RAINY & SNOWY ENVIRONMENTS
- 1X1 467MBPS STABLE PREFORMANCE
- WMM MODE PROVIDES QoS FEATURES TO 802.11AC NETWORKS
- 1X1 802.11AC 14DBI INTERNAL PANEL ANTENNAS
- OPERATES AS AN ACCESS POINT, CLIENT, AD-HOC, 802.11S, PSEUDO AD-HOC, MONITOR, WDS ACCESS POINT AND WDS CLIENT MODE
- 10/100 IEEE 802.3AF POE-COMPLIANT PORTS FOR PLACEMENT IN UNWIRED AREAS
- HIGH TRANSMIT POWER, UP TO 27 DBM, ENSURES GREATER COVERAGE RANGES



## LEARN MORE ABOUT THIS PRODUCT

### Withstand Harsh Environments

Designed to perform in harsh conditions, PT420 features industrial-grade IP67 plastic enclosure, ensuring the AP can withstand extreme outdoor climates where temperature is a factor. This includes prolonged outdoor exposure to sunlight, extreme cold, frost, snow, rain, lightning, heat and humidity.

### 1x1 467Mbps 802.11ac Speeds

1x1 467Mbps 802.11ac PT420 Access Point delivers a stable service for Wi-Fi devices. The bandwidth will carry a steady stream of surveillance camera traffic. Optimal algorithms increase network capacity and performance.

### Power over Ethernet Power

PT420 features one 10/100M PoE port, enabling placement in locations where power outlets are scarce or unavailable, such as on poles or rooftops. Power the APs through a connected Ethernet cable directly to an IEEE 802.3af PoE Switch or with an IEEE 802.3af PoE adapter.

### Maximized Wi-Fi Coverage

PT420 is designed for peak performance in a variety of outdoor environments providing stable performance, reception and long-range connections. High-transmit power reaches to 27dBm, ensuring reliable and long-range device coverage. In smart city cases or security camera display cases, PT420 can connect to central network by WDS client topology. The WDS client maximum distance is up to 5 km.

## CREATE A SMART CITY

POWERED BY PACKETALK

- ✓ **Customize a mobile surveillance trailer**



◀ Diesel-Powered Surveillance Trailer PT-RD6000

- ✓ **Add a ALPR asset**

Packetalk's ALPR cameras have embedded license plate recognition, AI video analytics and up to 90FPS.



◀ PTZ-3160-HD36ALPR

**QUESTIONS? CONTACT US AT**  
201 355 3323 OR [sales@packetalk.net](mailto:sales@packetalk.net)

**PACKETALK.NET**

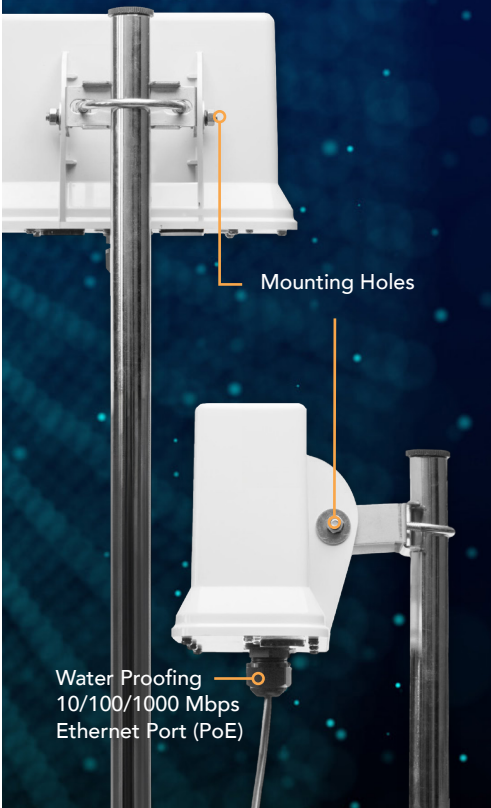
# PT420

## A COMPACT, LIGHT AND STABLE WIRELESS SOLUTION

PT420 provides wireless connectivity that is flexible, scalable and reliable for all outdoor environments.

When considering connections to edge devices, the PT420 offers stable Wi-Fi access for mobile users, surveillance cameras and other outdoor property, and provides a cost effective solution where large numbers of devices are to be deployed. PT420 can meet all the requirements of today's application needs.

With a light and strong plastic enclosure, PT420 is easy to handle, especially useful when being sited in awkward or precarious positions such as poles or rooftops. Despite its compact size, PT420 never compromises on quality. PT420 offers a superb bridge solution to connect Wi-Fi devices to a central network.



## SPECIFICATIONS

SOFTWARE FEATURES		HARDWARE FEATURES		
Wireless		Frequency	RF: 5 GHz Frequency Bands	
		Standards	IEEE 802.11n/ac	
		Operating Channels	5180 to 5850 GHz	
		Antennas	12 dBi panel antenna (VSWR 1.5:1)	
Routing	Static Route	Physical Interface	1 port 10/100/1000 Base-T/TX auto-sensing Support IEEE 802.3at PoE Factory Default Button	
	Firewall Security	- SSH Access	WAN LED Indicators	Steady on: Port is connected Blinking: Transmitting data Off: No Link
Networking		LAN LED Indicators	Steady on: Port is connected Blinking: Transmitting data Off: No Link	
		- DHCP Server (support class C) - Port Management - Speed/Duplex/Auto Negotiation/VLAN - Support IPv6	Certifications	FCC
System Management		CPU	Atheros QCA9563, QCA9882 & QCA8334	
		- Password protected configuration for web access - Comprehensive web-based management and policy setting - Scheduled Tasks - Real-time Traffic Statistic Information - Active DHCP Leases - Wireless Status - CPU/Memory Usage Monitor - NTP Server - Monitoring, Logging, and Alarms of system activities - Firmware upgrade, Factory default, Configuration Backup/Import, Reboot through Web browser	Flash Memory	16MB
		- Ping Watchdog, Reboot on internet connection lost/Periodic reboot - Diagnostics, Ping/Traceroute/Nslookup - Syslog - SNMP v1/v2c/v3	DRAM	128MB
			Power Consumption	12V/1 A power adapter or IEEE 802.3at PoE
System Services		ESD Protection	Contact discharge 6KV Air discharge 15KV	
			Weatherproof	IP67-Rated Enclosure
		Humidity (noncondensing)	Operating: 10% to 85% Storage: 5% to 90%	
		Temperature Range	Operating: 0°C to 45°C (32°F to 113°F) Storage: -20°C to 70°C (-4°F to 158°F)	

## GET IN TOUCH

CONTACT US

T (201) 355-3323  
F (201) 603-6405  
E sales@packetalk.net

[PACKETALK.NET](http://PACKETALK.NET)